

Updating The Mapping On Your Garmin Device

Please click on the below link –

<https://my.garmin.com>

Please make sure your Garmin device is connected to the computer via a USB cable before following the rest of this walkthrough

Updating The Mapping On Your Garmin Device

Language

myDashboard: Support


✓ Get the answers you're after in one simple place.

Welcome to myGarmin, your resource to

- [Register](#) your Garmin product
- Manage, unlock and download your [maps](#)
- Download [Garmin Mobile™ for BlackBerry®](#)
- Subscribe to [safety camera](#) information
- [Download](#) scenic routes, geocaches, games and more



Enter your username and password then Click on Sign In.



Sign In

Username

Password

[Create new account](#)
[Forgot password?](#) | [Forgot username?](#)

Updating The Mapping On Your Garmin Device

Click on **Manage Maps**.

myProducts

[Register](#)

Get the most from your Garmin. Register now.

[View Your Registered Products](#)

Find accessories, extras and information for your registered products.

myExtras

[Subscriptions](#)

Purchase and manage service subscriptions.

[Downloads](#)

Manage downloads for games, MAD Maps and more.

[View All Extras...](#)

myMaps

[Manage Maps](#)

Get map details for your registered products and maps. Download, activate/unlock and update your maps.

mySupport

[Orders](#)

View order history and track current orders.

[Repairs and Exchanges](#)

Information about your product repairs or exchanges.

[View All Support...](#)

Updating The Mapping On Your Garmin Device

Click on Download.



nūvi® 1410 - 1Q2176301

 [Shop for more maps](#)

[Activate Gift Card](#)

[Free Map Update Policy](#)

MPC Map

[Details](#)

City Navigator Europe NT 2012.20, UK &
Ireland - Map+™, Jun 11

[Details](#)

 [Download](#)

Updating The Mapping On Your Garmin Device

Select Download Method

Option
1
(Recommended)



Garmin Lifetime Updater

Garmin Lifetime Updater continually checks for available map updates and automatically downloads them to your computer. It then alerts you right on your desktop when files are ready to install.

[Download for Windows](#)

[System Requirements](#) | [Mac Version](#)

Click Garmin Map Update Application.

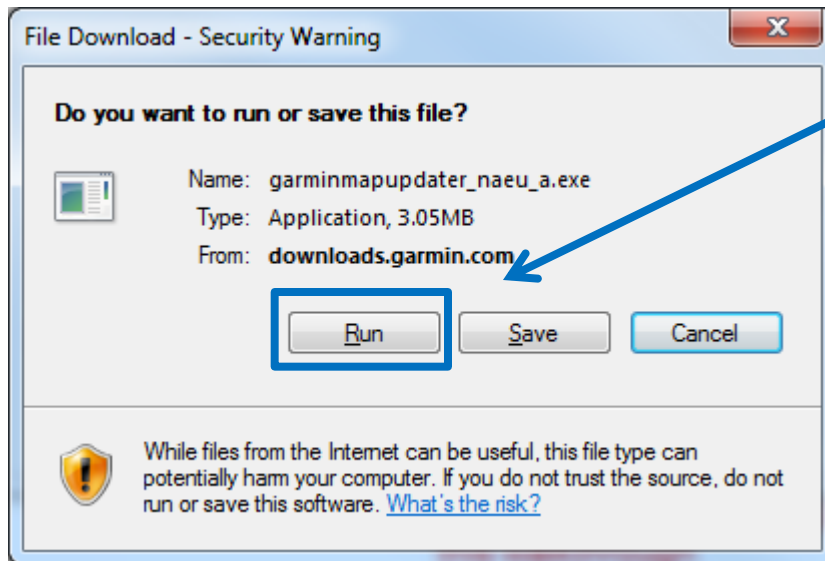
Option
2

Download the [Garmin Map Update application](#) to guide you through this single update without installing permanent files on the computer you are using.

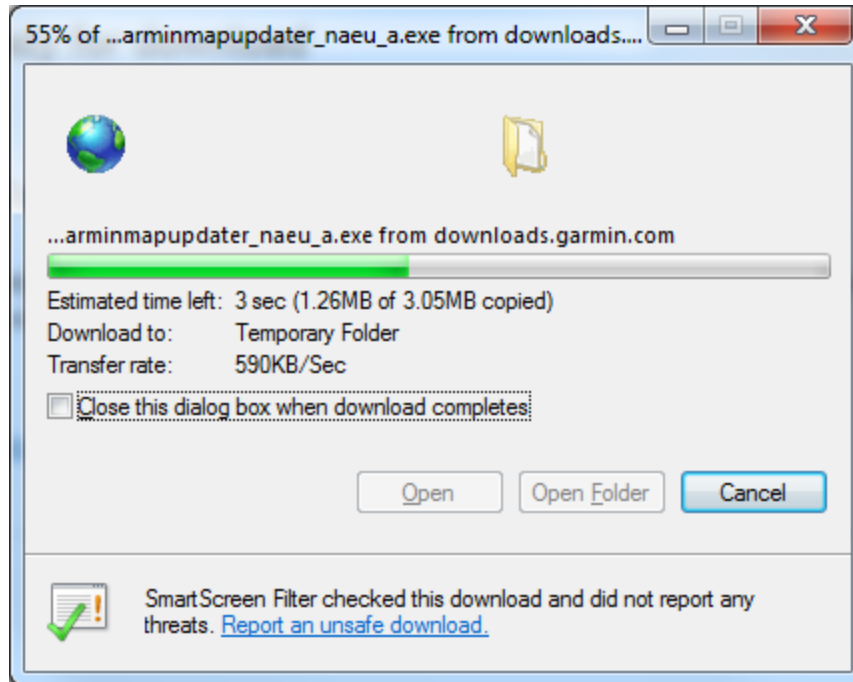
[View detailed instructions](#)

Updating The Mapping On Your Garmin Device

Click on **Run**.



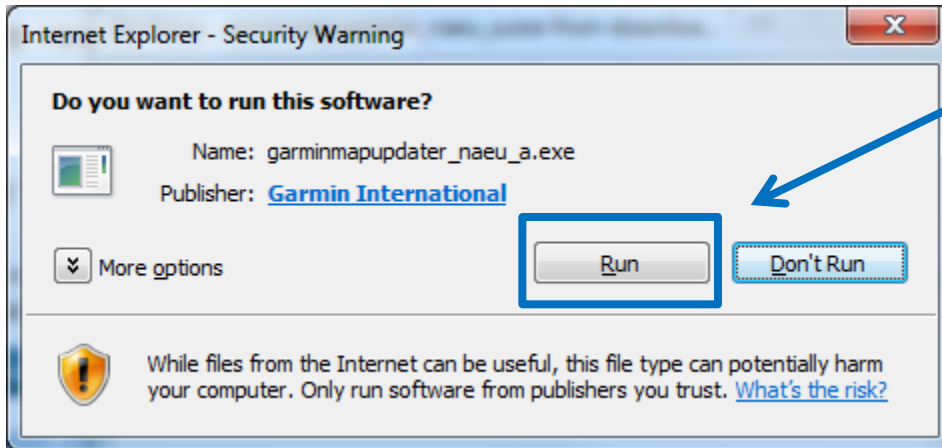
Updating The Mapping On Your Garmin Device



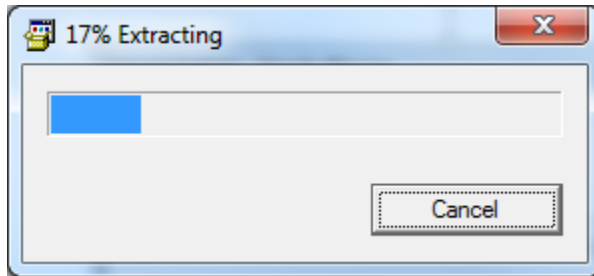
You will see the progress of the download of our software this can take several minutes.

Updating The Mapping On Your Garmin Device

Click on Run.



Updating The Mapping On Your Garmin Device



You will see the progress of the extraction of our software this can take several minutes.

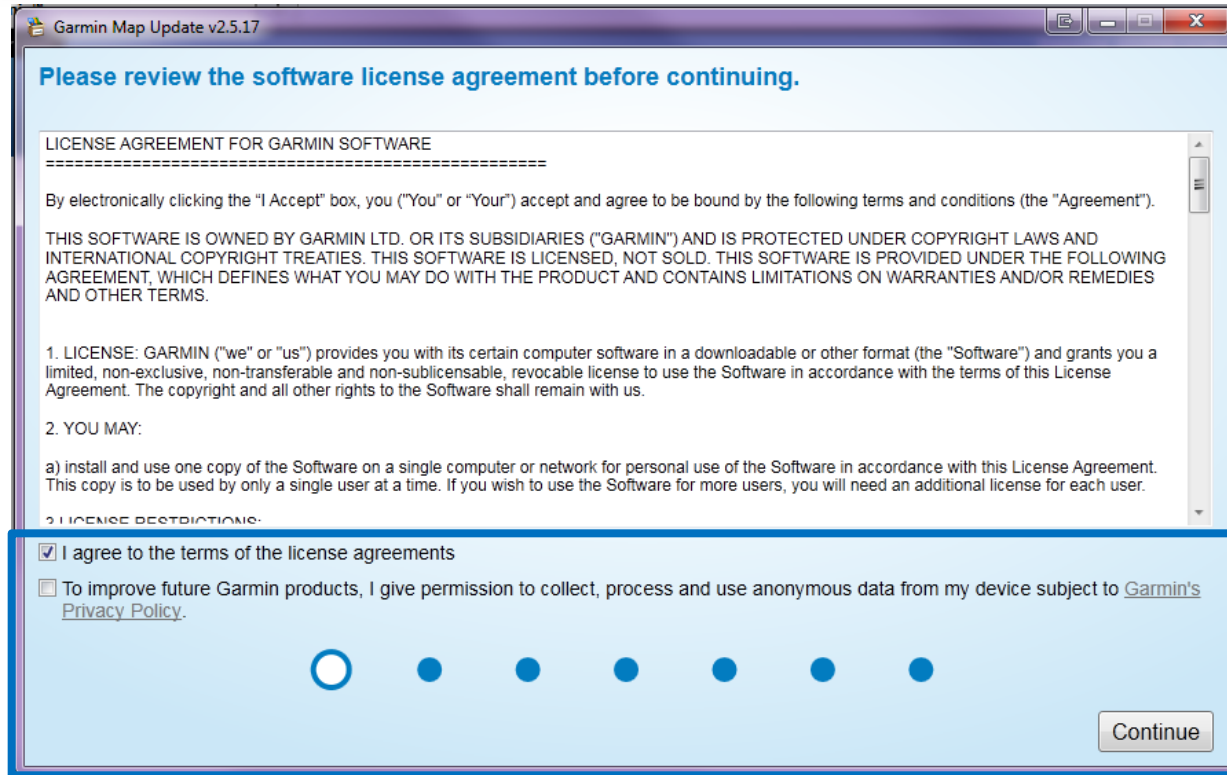
Updating The Mapping On Your Garmin Device



Click on Continue.



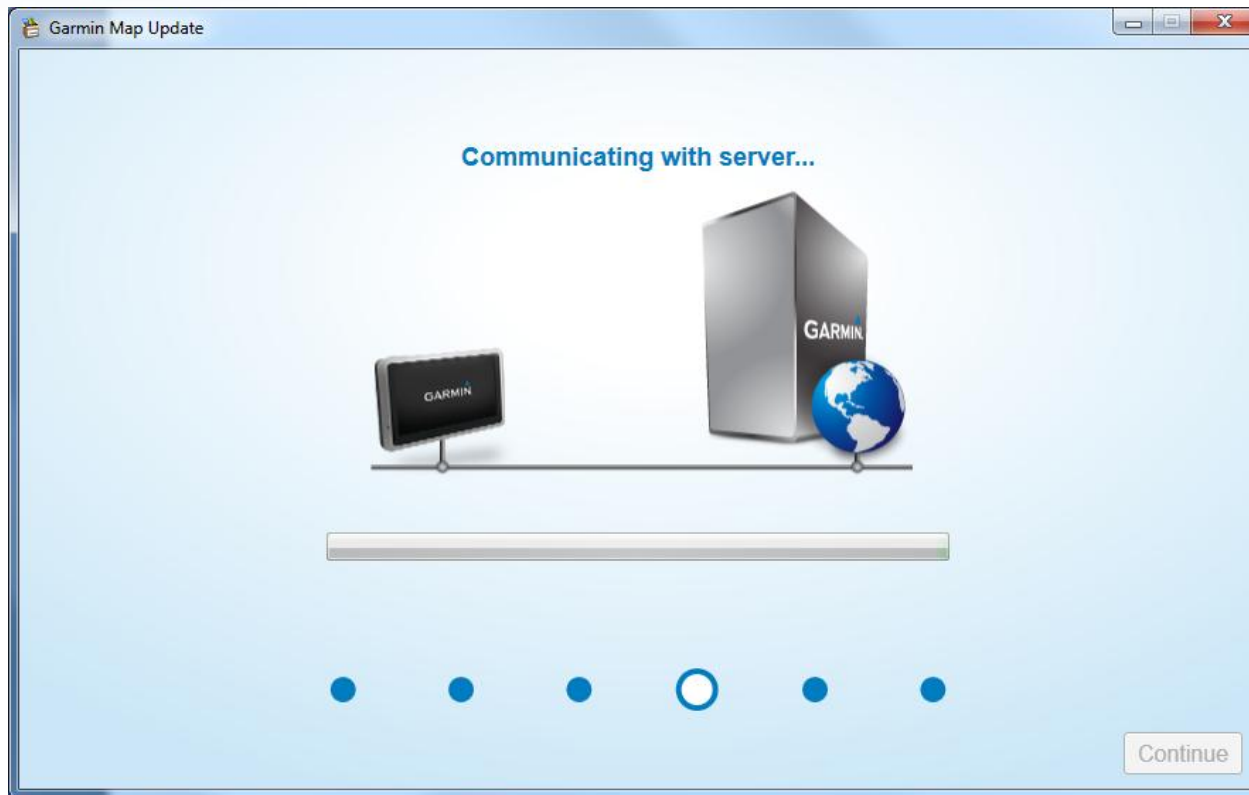
Updating The Mapping On Your Garmin Device



Read the Software License Agreement and if you agree, tick the box, then click **Continue**

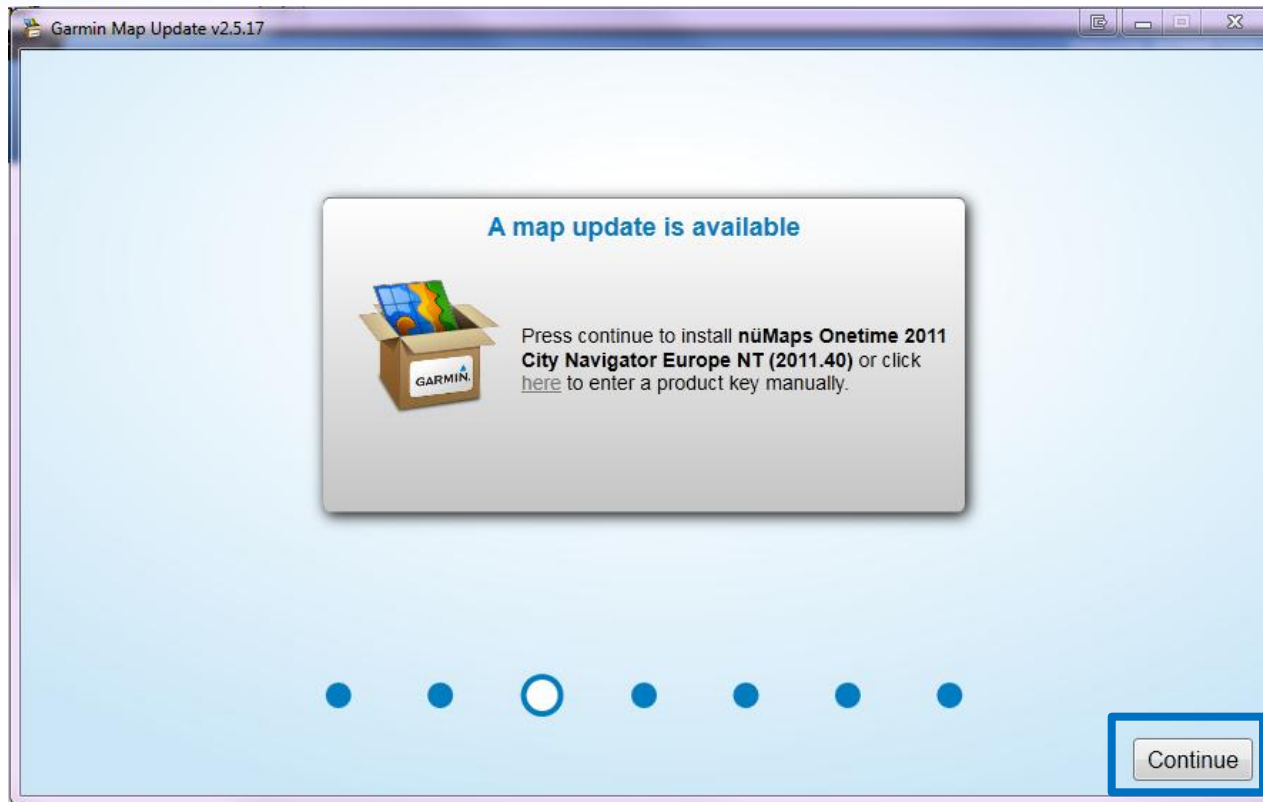


Updating The Mapping On Your Garmin Device

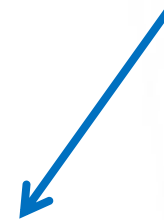


The download will now communicate with our website.

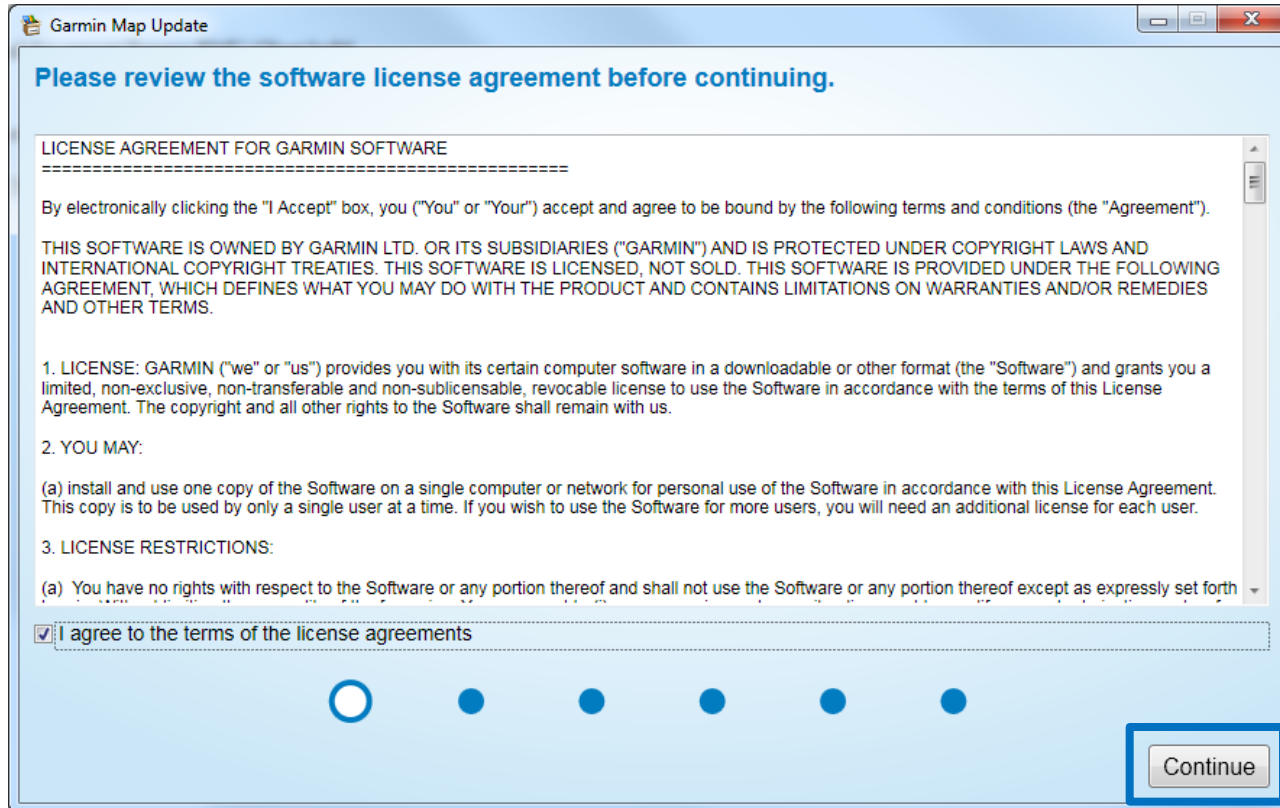
Updating The Mapping On Your Garmin Device



Click Continue.



Updating The Mapping On Your Garmin Device



The screenshot shows a window titled "Garmin Map Update". Inside, there is a heading "Please review the software license agreement before continuing." followed by a section titled "LICENSE AGREEMENT FOR GARMIN SOFTWARE". The text of the agreement is as follows:

By electronically clicking the "I Accept" box, you ("You" or "Your") accept and agree to be bound by the following terms and conditions (the "Agreement").

THIS SOFTWARE IS OWNED BY GARMIN LTD. OR ITS SUBSIDIARIES ("GARMIN") AND IS PROTECTED UNDER COPYRIGHT LAWS AND INTERNATIONAL COPYRIGHT TREATIES. THIS SOFTWARE IS LICENSED, NOT SOLD. THIS SOFTWARE IS PROVIDED UNDER THE FOLLOWING AGREEMENT, WHICH DEFINES WHAT YOU MAY DO WITH THE PRODUCT AND CONTAINS LIMITATIONS ON WARRANTIES AND/OR REMEDIES AND OTHER TERMS.

1. LICENSE: GARMIN ("we" or "us") provides you with its certain computer software in a downloadable or other format (the "Software") and grants you a limited, non-exclusive, non-transferable and non-sublicensable, revocable license to use the Software in accordance with the terms of this License Agreement. The copyright and all other rights to the Software shall remain with us.

2. YOU MAY:

(a) install and use one copy of the Software on a single computer or network for personal use of the Software in accordance with this License Agreement. This copy is to be used by only a single user at a time. If you wish to use the Software for more users, you will need an additional license for each user.

3. LICENSE RESTRICTIONS:

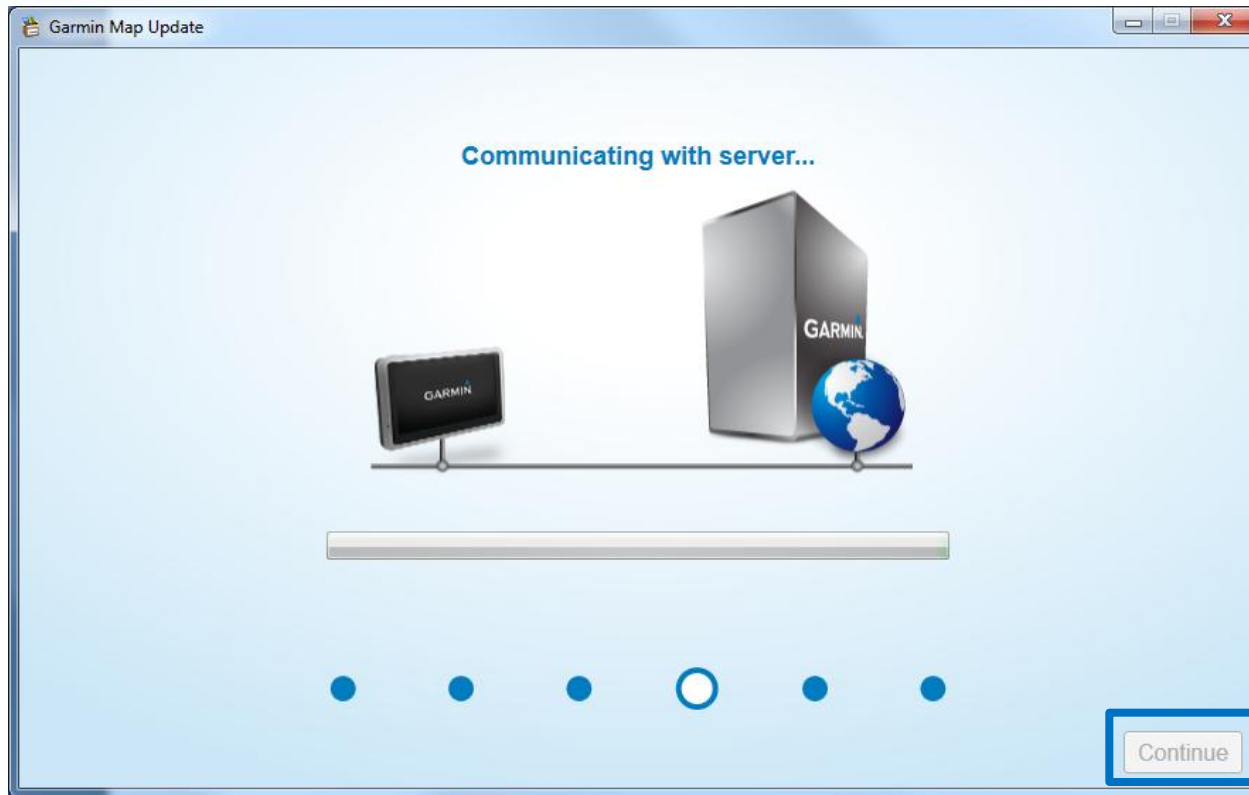
(a) You have no rights with respect to the Software or any portion thereof and shall not use the Software or any portion thereof except as expressly set forth

At the bottom of the window, there is a checkbox labeled "I agree to the terms of the license agreements" which is checked. Below this is a progress indicator with six dots, the first of which is highlighted. In the bottom right corner, there is a "Continue" button, which is highlighted with a blue rectangle.

Read the Software License Agreement and if you agree, tick the box, then click **Continue**

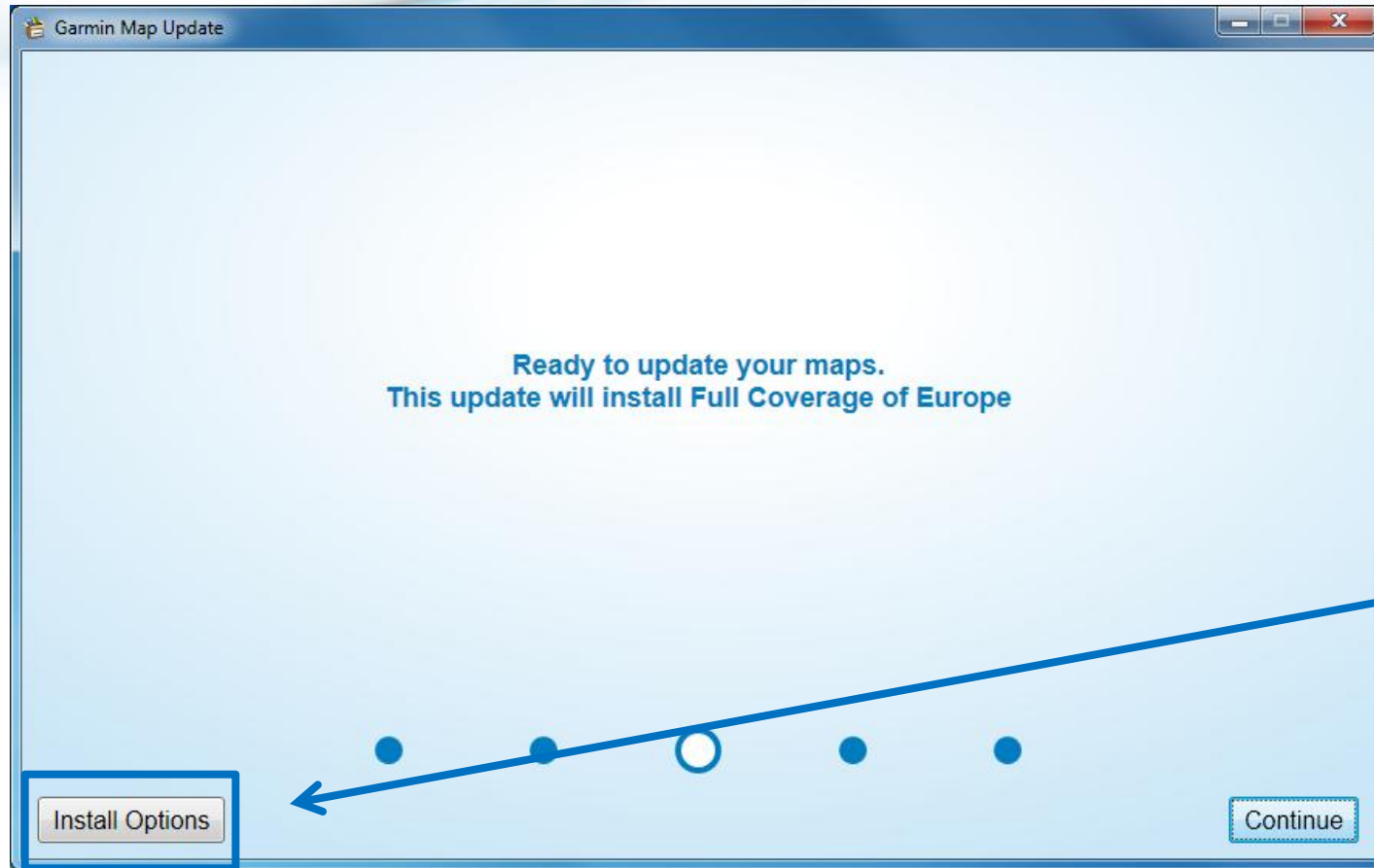


Updating The Mapping On Your Garmin Device



The download will now communicate with our website. Once this has been done click on **Continue**.

Updating The Mapping On Your Garmin Device



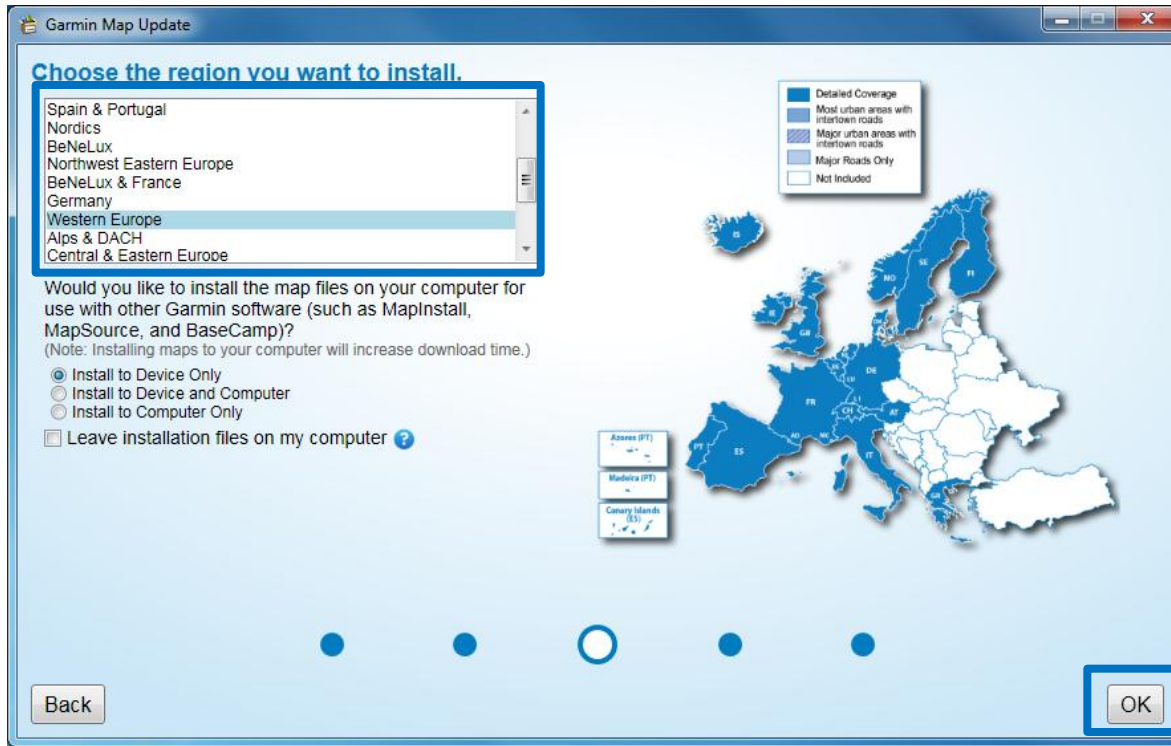
Click on Install
Options.

Updating The Mapping On Your Garmin Device

You will see a drop down box on the left of the screen please scroll through the list clicking on a region to display the coverage map. The regions that are in red exceed the internal space on your device.

Once you have clicked on a region and are happy with the coverage, you will also need to select the option to install mapping to your device and computer. You will now also see an option called **Leave installation files on my computer** if you have to update more than one device we recommend selecting this option as it will dramatically reduce the update time when next run on this computer. This option will download the European mapping to your computers temp files then when you run the update again it will skip the download part of the update as seen on the next page of this guide.

Please note the whole of Europe will be installed to your PC when selecting **Device and Computer** or **Install Computer Only**.



Updating The Mapping On Your Garmin Device

You will see the mapping being downloaded and then sent across to your unit. You will see the amount of time remaining at each stage. There is also a pause button to enable the download to be done in stages. Once this has been done click **Continue**.



Updating The Mapping On Your Garmin Device

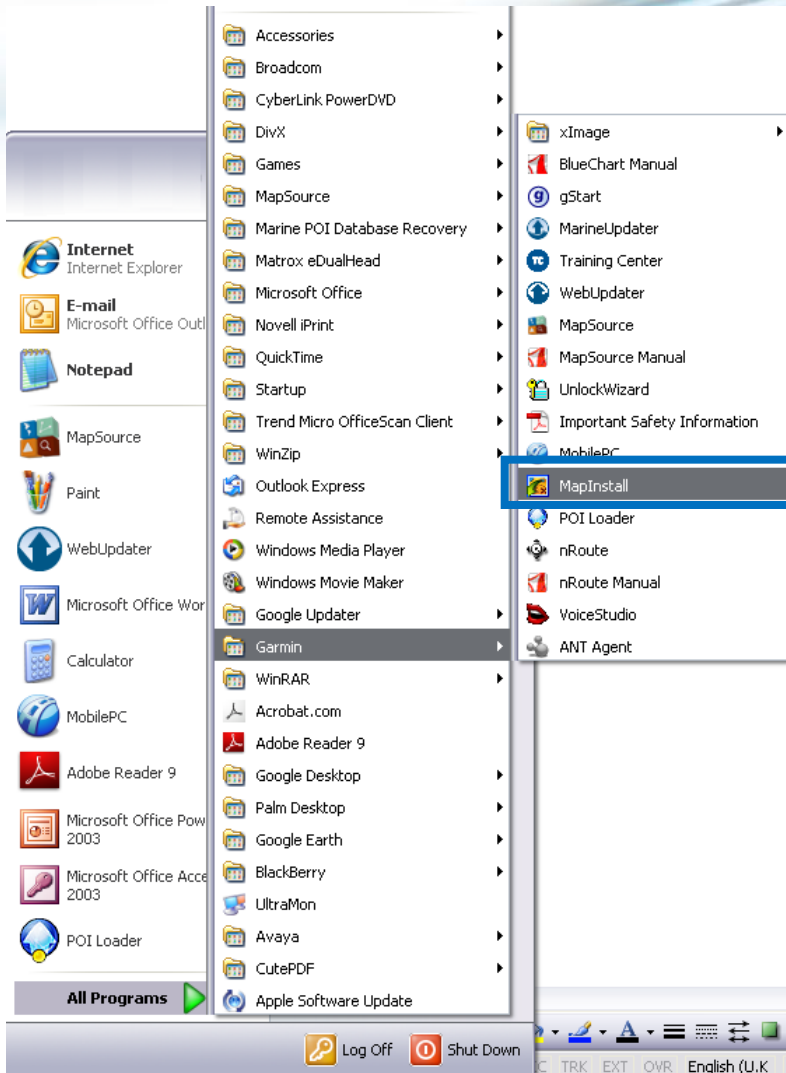


The mapping has been successfully updated on your Garmin device and computer click on **Exit**. Please continue with this guide if you would like to send the remaining European mapping to your blank SD card.

Sending Additional Mapping To A SD Card

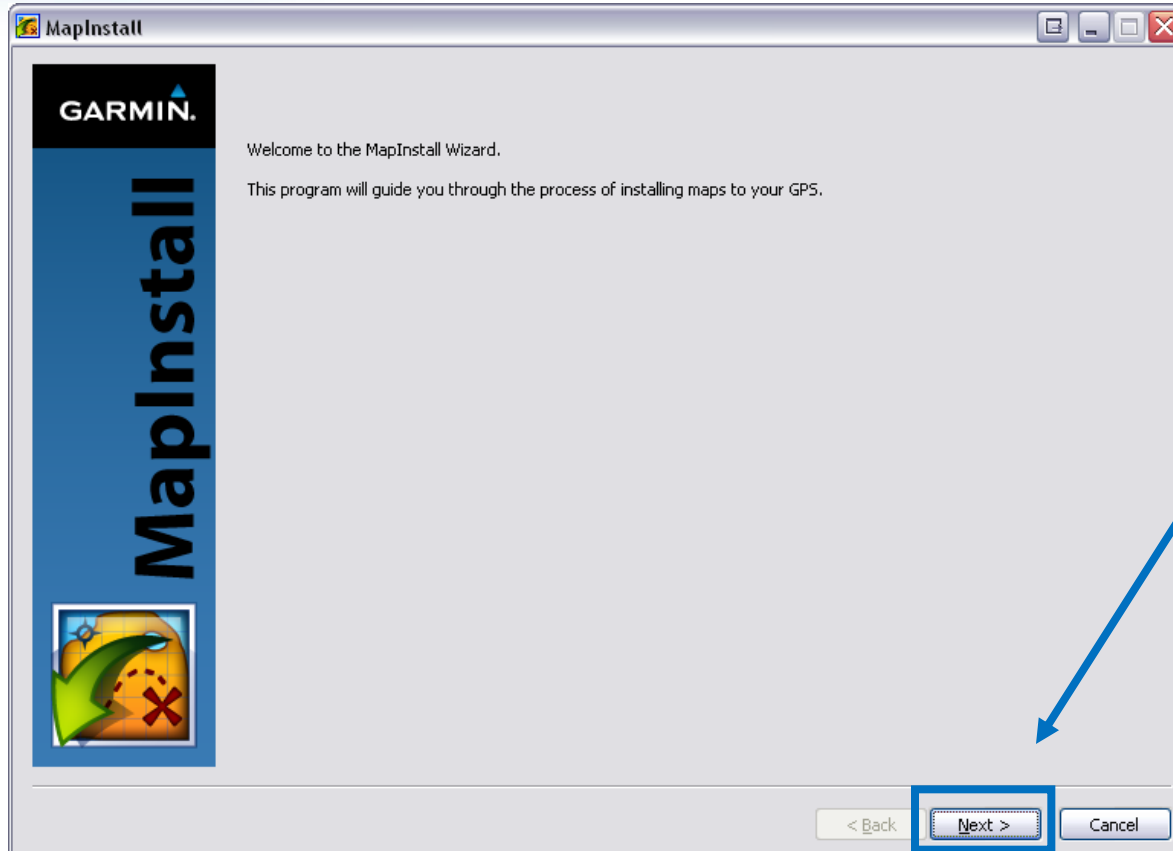
Please make sure your Garmin device is connected to the computer via a USB cable and Insert your blank SD card in to the Garmin Device before following the rest of this walkthrough. If you would like to load the whole of Europe to your device you will need a 4GB blank micro or standard SD card depending on your units card reader.

Sending Additional Mapping To A SD Card



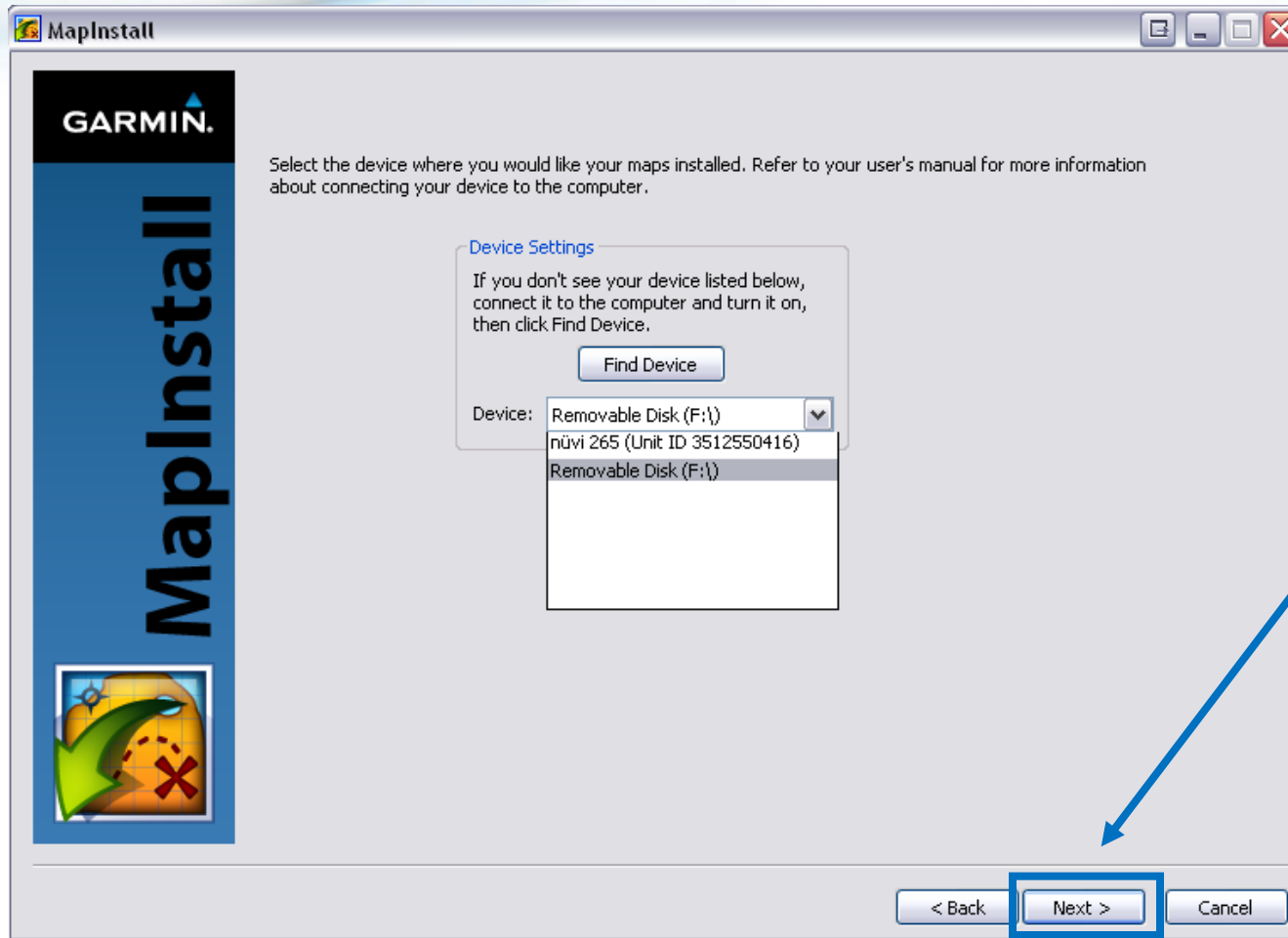
Click on Start, All Programs,
Garmin Folder, then open
MapInstall

Sending Additional Mapping To A SD Card



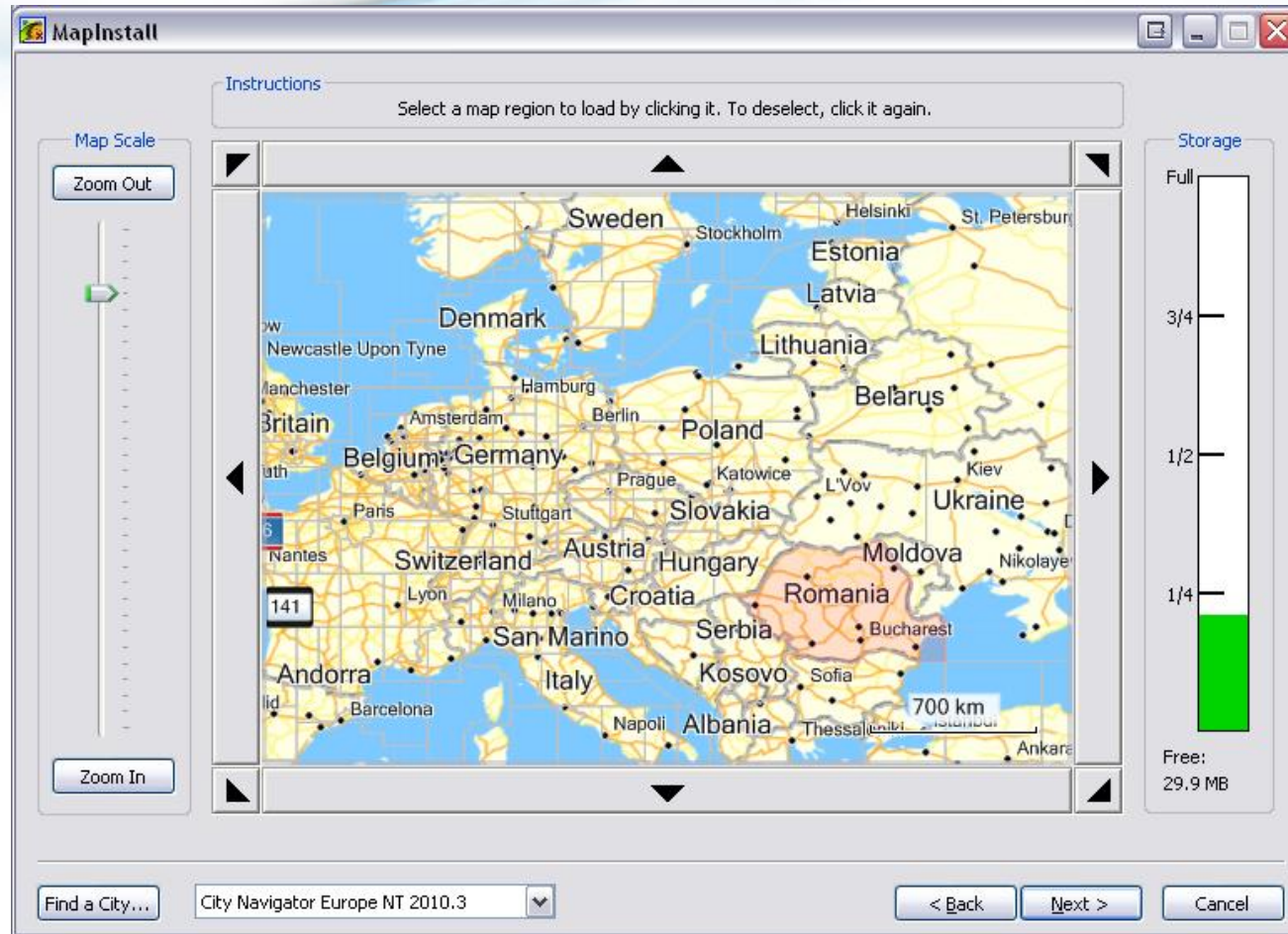
Click on Next

Sending Additional Mapping To A SD Card



From the drop down box select the **Removable Disk Drive** this is your SD card then click on **Next**.

Sending Additional Mapping To A SD Card

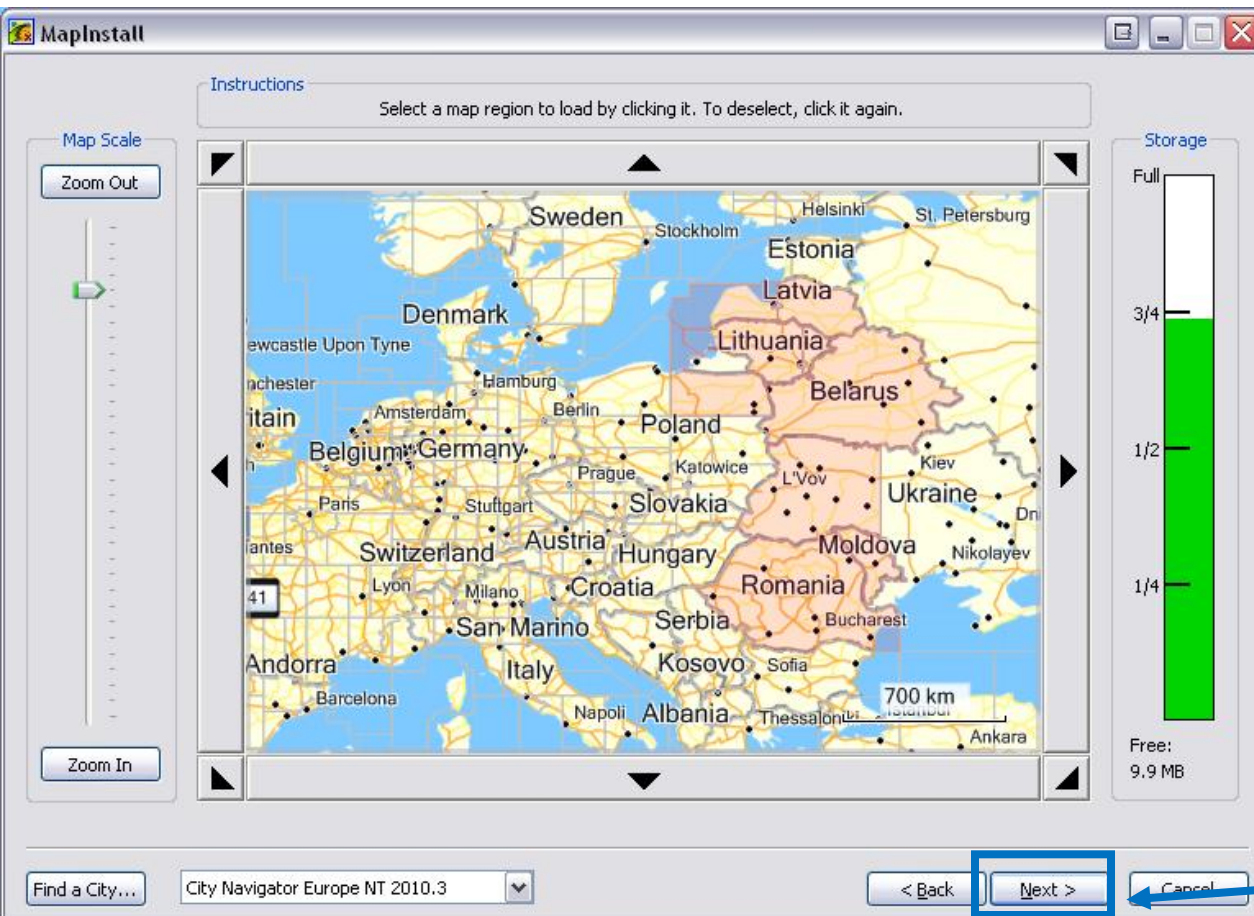


You will see a Map page you can select the mapping that you want to send to the SD card. To do this simply move your mouse over the region and click on it, the region will then turn pink.

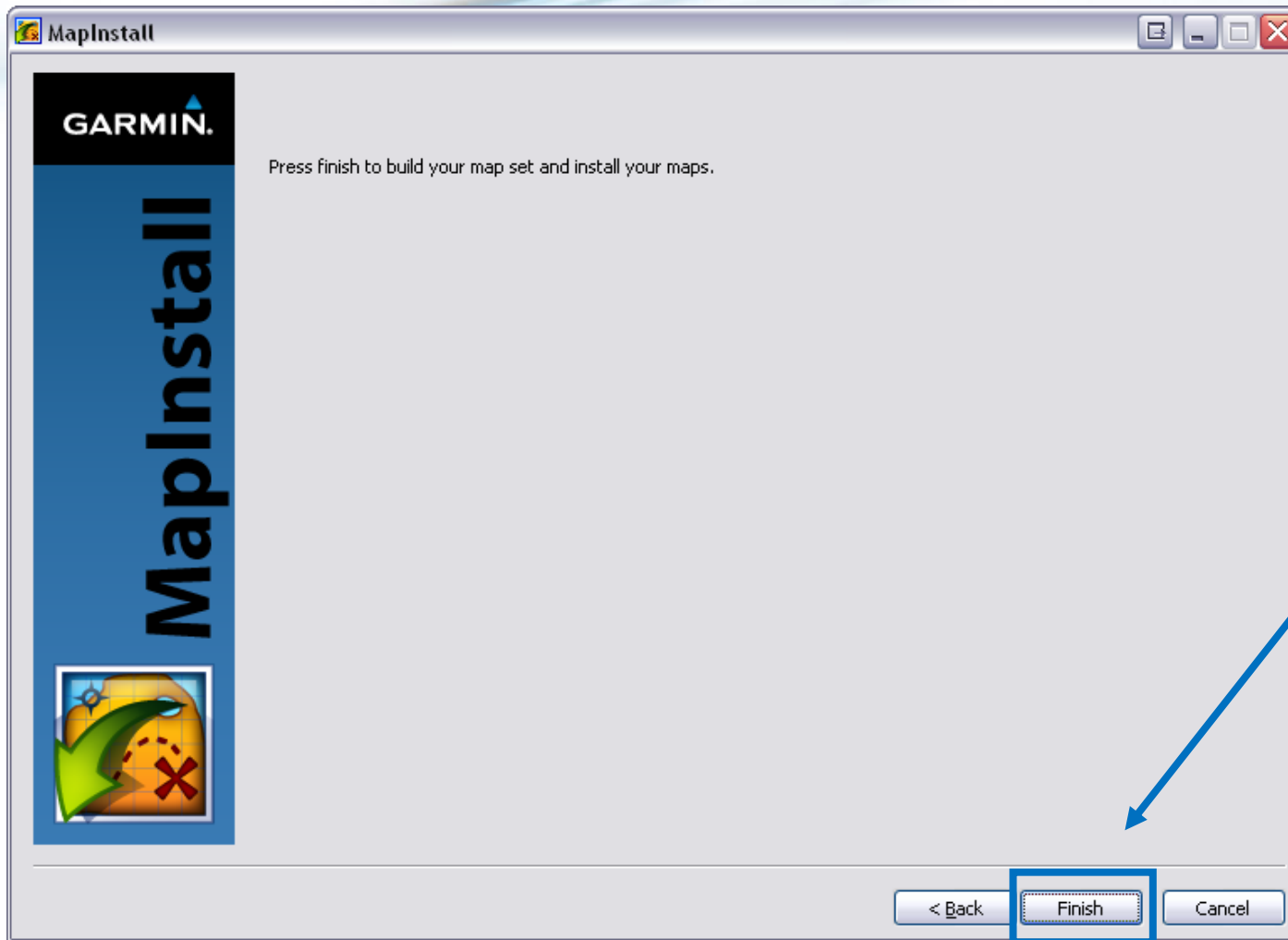
Sending Additional Mapping To A SD Card

You can select multiple regions by simply clicking on them, or alternatively click and hold your mouse and drag over multiple regions. You will notice a bar on the right hand side of the program this is how much space you have left on your memory card this needs to remain **Green**.

If you need to deselect some mapping simply click on the region again and it will change from pink back to white. Once you have selected all of the mapping you require click on **Next**

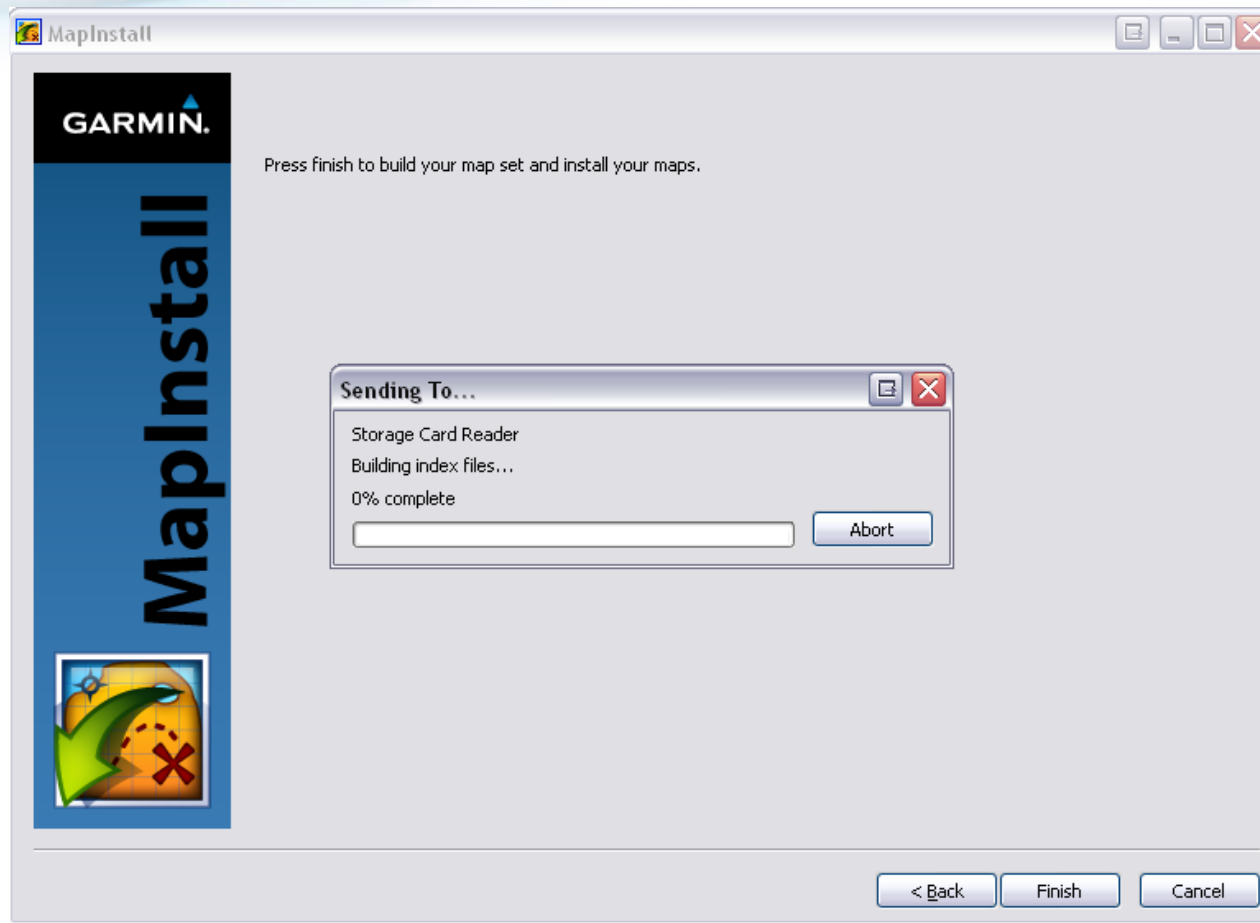


Sending Additional Mapping To A SD Card



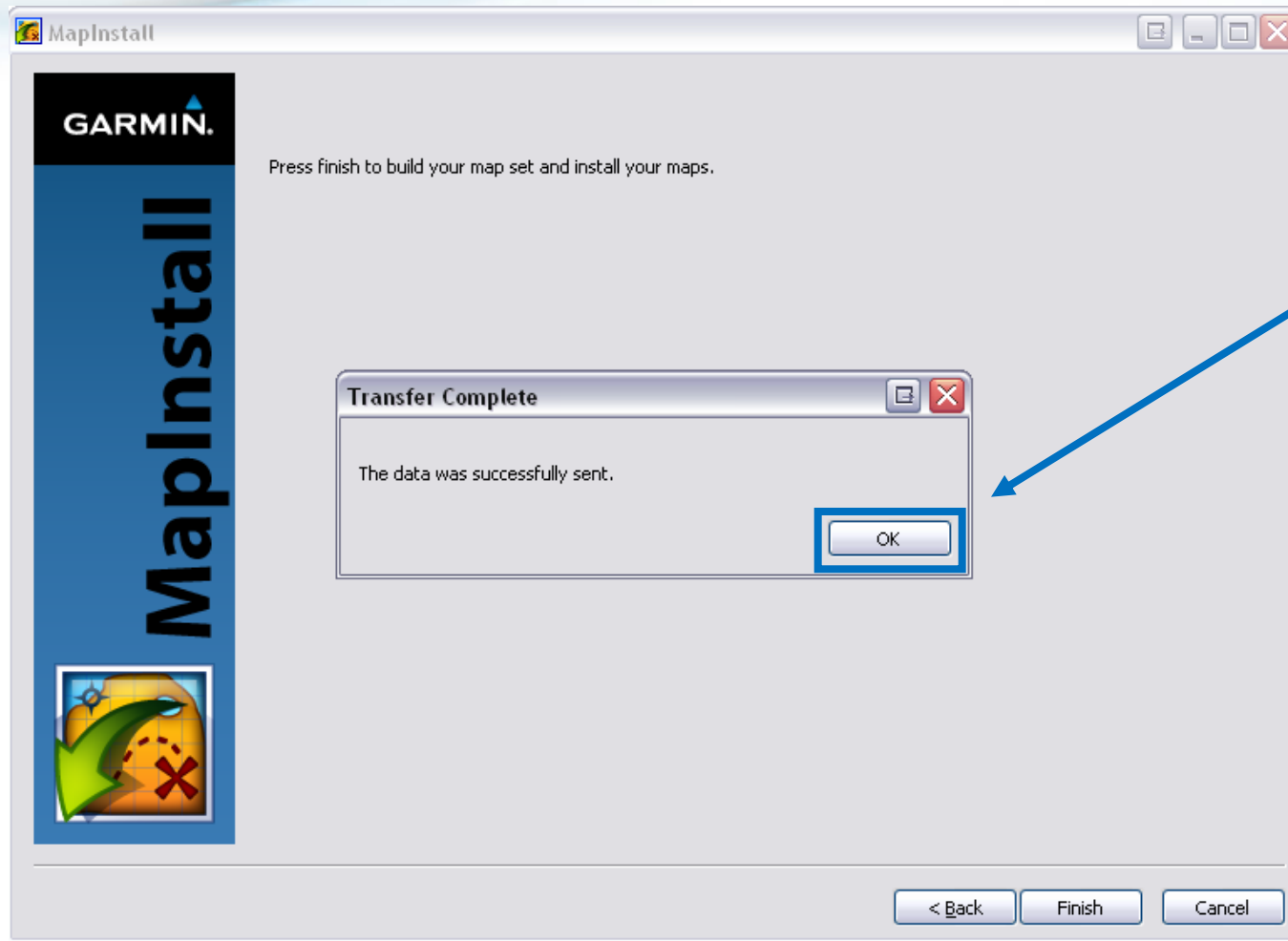
Click on Finish

Sending Additional Mapping To A SD Card



The MapInstall program will begin to build the files for the SD card then send then across

Sending Additional Mapping To A SD Card



The maps have now
been sent across to
your SD card click
OK